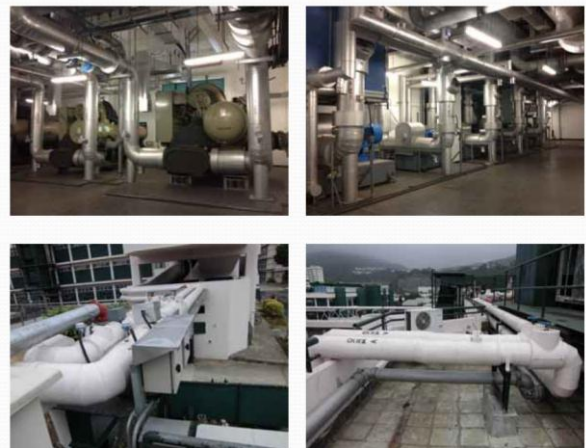


## **Joint Student Branch Visit** **HKJC Shatin Race Course District cooling system**

*(ASHRAE HK Chapter Joint Student Branch Event)*



**Sha Tin Racecourse** (沙田馬場) is a racecourse of superlatives - the home of the world's richest day of turf racing, the world's first retractable roof over a parade ring, and a Guinness World Record of the world's longest Diamond Vision Television screen in 2003. Major racing events include the LONGINES Hong Kong International Races, the Audemars Piguet QEII Cup, Champions Mile and the BMW Hong Kong Derby, etc.

**Objectives:** District cooling system will be the highlight of the event. The purpose is to allow students to know more about the operation of various facilities in Racecourse. Student can learn district cooling design and benefit of using district cooling system.

**Date & Time:** 24 October (Sat), 10:00am - 12:30pm

**Assembly time & place:** 9:30am, MTR University Station 大學站美心快餐外集合

**No. of Participant:** Max. 30 heads for Student Member of ASHRAE HK Chapter

**\*\* Free of Charge for ASHRAE Student Member.**  
**The transportation fee should be bared by participant.**

**For registration and details, please contact your student branch representative or ASHRAE Hong Kong Student activities Chair Mr. Taylor Chow (email: [chow.taylor@pbworld.com](mailto:chow.taylor@pbworld.com))**